



Your guide to  
**RANGITIKEI  
COLLEGE**  
Quality education in a rural setting



# At Rangitikei College we value:



Respect

Whakaute

Usitai

Excellence

Eke Panuku

Lelei

Participation

Whakauru

Auai

# Live locally. Love locally. Learn locally

This is *your* school Southern Rangitikei...

Kia ora, talofa lava and welcome to Rangitikei College. My first involvement with the College was via my parents, who worked as teachers there when I was growing up. I went to school there, as did my boys.

So, I speak from experience when I say that our local College offers some of the best educational outcomes around. It's got a fantastic family-friendly atmosphere, very motivated and specialised teachers, an innovative teaching programme and great classroom resources.

It's a place of learning where you have the opportunity to get involved in pretty much anything that inspires you. Sport, theatre, the arts, cultural activities, the outdoors or robotics and science/tech – this school really does offer you and your family the complete educational package.

Our community supports our school and has helped build it over the years. So when you're considering future schooling for your kids, I recommend that the first thing you do is head down to the College and

have a look around, a chat with the staff and the principal. I guarantee that like me, you'll be impressed with what it offers and the warm welcome you'll receive from staff and students alike.

## Andy Watson

Mayor Rangitikei District  
Former Board of Trustees Chair  
Former pupil and parent





engineer  
your career

PL 1000 LEVEL

CONSTRUCTION

# What are YOU looking for in a school?

Each year I hear very similar answers from our new intake of students and parents to my question 'what are you looking for in a school'? Here at Rangitikei College we strive to offer you:

- a place of opportunities – where you can realise your passions and dreams with an educational experience tailored to your needs.
- a place where you are challenged and supported to achieve your goals, and
- a place where you will be well cared for, respected, and made to feel a part of our extended College family.

We don't talk much in this part of our student guide about the curriculum or our desire as a school to strive for excellence and achievement – we simply take that as a given. What we hope to do is show you why we love our place, how we're different, where we're heading, and why we think you should join us on your learning journey.

Finally, I would like to assure you that when you choose to join our school, no matter what your potential, no matter what has gone before... we will look after you. One of the things I really believe in is that schools don't enrol students, they enrol families. Parents and caregivers are always welcome in our school, and I enjoy meeting with you, and taking a personal interest in your journey.

**Tony Booker**  
Principal



# Why join us? Our students say...



*“Our school environment is really welcoming and accepting...”*

**Sonny**  
Year 13

*“We’re not only a good school... we’re a great school!”*

**Mary**  
Year 12

*“This school has given me opportunities to express myself, given me whatever I need to try and get ahead in sports and schoolwork...”*

**Jermaine**  
Year 13

# Our teachers say...



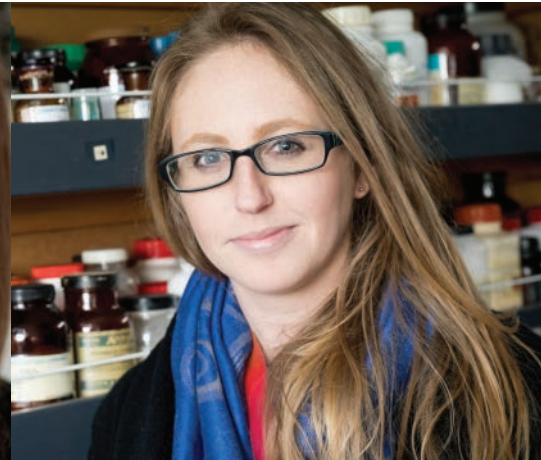
*“ We have a strong relationship with whānau. We love getting the family involved as much as possible.”*

**Ayden Hancy**  
Music Teacher



*“ No matter whether its acceleration or extension we provide for you. We have time for those important discussions – you just cannot become invisible at Rangitikei College!! ”*

**Tanya Thorogood**  
SWAN (Students with Additional Needs) Educator



*“ Our school is not afraid to change, to try and make the learning process better for our kids...”*

**Lea Godden**  
Agriculture/Science Teacher



*“The close-knit community atmosphere here is amazing. In one term I have made more connections with the students than in all the big schools I have taught at in the past. Pretty much all the kids here know each other right from Year 9 through to 13!”*

**Anthony John**  
Maths Teacher





# Who are we? A provider of future-proofed learning



*“For my Inquiry-Quest project I’m teaching Marton Primary School kids about robotics. My goal is to show them the Vex IQ robotics kits and hopefully get them into competitions and get them inspired.”*

**Matthew** Year 11

The challenge facing all schools today is how we equip our students with the skills they will need to take on challenges and opportunities that we adults can't even begin to imagine.

Schools are too often teaching for a world that no longer exists; one that places too much emphasis on test results and not enough on the 21st-century skills that you will need for the 'real world'. Skills like reliability, problem-solving, creativity and an ability to collaborate and communicate in a variety of ways.

Rangitikei College's innovative I-Q (Inquiry-Quest) project-based learning programme is designed to do just that. You'll spend a day a week working on a curriculum-linked project inspired by your interests and passions, all whilst earning NCEA credits for it.





*“ We teach for our community. We’re into project-based, student-driven learning. 49% of the jobs we know now will not be around in 10-15 years time as they will have become automated... so that’s 50% totally new and unexpected jobs that will be on these kid’s career horizons.”*

**Deborah Jorgensen**

Mechanical  
Engineering/  
Design & Visual  
Communication  
Teacher

# Who are we? A small school with a big heart



*“ We are one big family here and despite the fact it’s a small school there are so many opportunities - whether you’re into sports or performing arts or anything, it’s pretty cool. Since it’s a smaller school teachers are allowed to focus on you.”*

**Brylee** Year 12

When you’re part of a smaller school, you know its value. Every day it’s reinforced that you belong to a tight-knit College community where everyone knows each other and relationships are valued.

Our roll sits between 300 -350 and we’ve experienced significant growth in student numbers in the last few years as our community has responded to our innovative approach to learning.

Your teachers will get to know you well as you move through our year groups. We have a commitment to maintaining small class sizes and are light on our feet so we can quickly adapt our teaching to your needs. We prioritise supporting all our students to own their own education pathway so you’ll start each school day with an academic mentoring session. You’ll meet with your Academic Mentor in a classroom setting and have the opportunity to discuss problems, successes, and anything else important to you. We use this time to look after you and make sure that you are looking after yourself.

This is how we ensure no-one falls behind, no-one slips through the gaps and no-one is ‘just a number’.





**Teachers prioritise student wellbeing and meet the holistic needs of individual students.**

Education  
Review  
Office  
2015

*“ We want to have a relationship with you... as a family or as a part of our community. We want to have a relationship with your child. That’s what life is about – relationships. How to have good relationships and how to restore a relationship you’ve screwed up – that’s a 21st century skill that we teach alongside everything else.”*

**Vanessa Edwards** Art Teacher/Academic Mentor

# Who are we?

## A community hub

We value our history in the Southern Rangitikei community and our place as your 'school of choice'. We strive to reflect and connect with our community in everything we do.

We're part of the new 'community of learning' initiative that includes all our local primary schools. Our College resources are used to support learning and teaching well beyond our school gates and thereby create a smooth pathway from primary school into College. An example of this is the 'tech' classes (sewing, cooking and woodwork) that we run for local primary schools.

Our popular new multi-sport turf is a community facility, open and welcoming to all.

As a Rangitikei College student you'll be proud to wear your uniform and be visible in your community – whether it's participating in cultural or sporting events or undertaking project work outside College as part of your Inquiry-Quest projects or the school-wide Impact Weeks held each November.





**“We’re becoming a really welcoming, 24-7 venue so that the College’s infrastructure serves, and is open to, the community as much as possible.”**

Greg Carlyon  
Board of Trustees  
Chair 2014- 2017



# At Rangitikei College we offer you opportunities

We'll give you  
the chance to  
**LEARN**

Your choice of subjects is not limited by our size or location. The College's high-tech video conference learning hub means you can study almost any subject on offer in New Zealand - simply by connecting with others in a virtual learning environment.

As a student you will have many options for learning outside our College by participating in events and activities such as the Stage Challenge, Ngā Manu Kōrero (speech contest), Hillary Outdoors Tongariro, Pasifika Fusion and Young Enterprise. We also offer several innovative programmes that provide clear pathways and smooth transitions from school to the workplace or further training, and that enable students to be enrolled



at school yet still gain valuable work experience at the same time.

We believe any student can achieve

their dreams at Rangitikei College. We don't aim to prepare students for 'something'; we aim to prepare them for 'anything'!





We're known for our strengths in the drama/arts/dance and sports science subject areas. We have frequent performance nights for music, dance and drama, and our Pasifika and kapa haka groups are growing strongly. We're proud that we consistently gain New Zealand scholarships in Sports Science.





*“In Sports Science we’ve had eight scholarships in five years. For me, scholarship starts in year 9 and 10, where you get your students looking critically at the world around them.”*

**Aletia Thompson** Sports Science Teacher





## We'll give you the chance to **PLAY**

Whether its music or sport, dance or drama – the opportunities and facilities that support you to 'play' on our College campus are many. Our multisport turf, playing fields, gym and pool are well equipped and our fleet of College vans ferry students to games, events and off-site field trips. We're also well down the track with developing our performing arts facilities to a very high standard.



**A sustained focus on developing a positive environment for learning has led to an enhanced school culture and values that support success.**

Education Review Office  
2015





*“For me as a Samoan I want to keep my language, so it’s cool they have a Samoan class so I can still have my language in school and show who we are.”*

**Elisapeta Year 13**

## We'll give you the chance to **SHARE**

We work hard to provide a family environment at our College. You will feel like you belong to something much bigger than just your year or your class, and we embrace the rich culture within our College community with many celebrations and events. Whanaungatanga (kinship, sense of family connection, belonging) is key to our College culture. We look after our own.

High school is where you will make friendships you will treasure for life and we love to stay in touch with our former pupils and share what they are up to.

Far left: Ngaire-Ann, Year 11.  
[Ngāti Apa, Ngāti Tūwharetoa].  
Delegate/athlete at 2017 World  
Indigenous Games, Canada.





*“Level 3 te reo is pretty full on but it’s something enjoy so I get the most out of it. Sometimes we speak in Māori around school – Mr Harrison our teacher encourages us to do so. And it’s cool some of the teachers are learning te reo too.”*

**Monika Year 13 [Ngā Rauru, Ngāti Maniapoto]**



# At Rangitikei College we offer you support

We'll help you to  
**ACHIEVE**

If you're a talented student you'll be well supported and have opportunities to compete academically at a national level, gain recognition and attend national (and global) events.

Our students regularly achieve scholarships and we have world record holders, top-level achievers and impressive NCEA statistics that have been tracking upwards for the last few years.





*“Our Alternative Education programme is for students who have missed learning to some degree. It’s small group, intensive teaching that accelerates learning.”*

**Whaea Ruth Firmin-Green**  
*Alternative Education*



*“We have experienced staff, extremely low staff-student ratios, and individual education plans to support each child with complex needs.”*

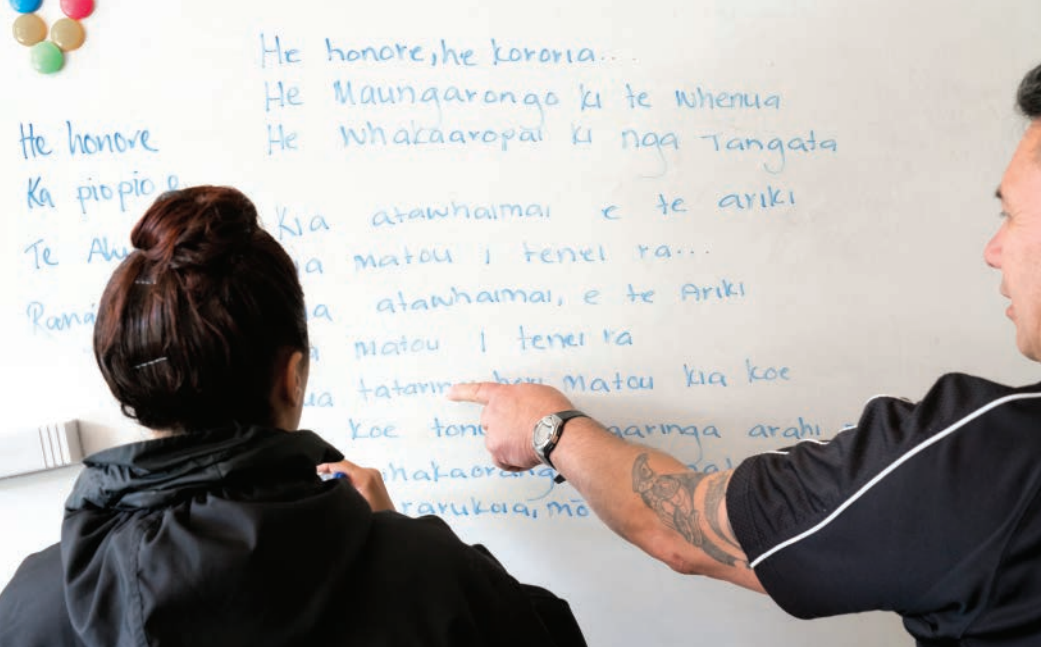
**Tanya Thorogood**  
*SWAN (Students with Additional Needs)  
Educator*

## We'll help you to **LEARN**

If you're a student whose first language is not English, you'll be supported to build your language skills via our ESOL (English for Speakers of Other Languages) programme.

Students with additional learning needs or learning gaps are well catered for through our well-recognised, personalised and collaborative student-teacher-whanau approach. Our staff are experts in their field, driven by knowledge and their desire to support all students to be their very best. No matter whether its acceleration or extension you need, we will provide for you.





## We'll help you to **RELATE**

The ability to grow, tend to and repair relationships in your workplace, or community groups is an absolutely essential skill – one that we all need if we are to have a strongly-connected, empathetic, functioning society.

Learning about yourself and how to navigate the world of relationships is a critical skill that we teach and support via our academic mentoring programme and three-way learning conferences (a partnership between you, your whānau and the College).







# We'll help you to **FLOURISH**

We're a caring school with an extensive student guidance network made up of a Guidance Counsellor, Deans, a Careers Advisor and Academic Mentors.

As a restorative practice school our focus is on managing relationships. It's not about punishment, but rather the teacher and the student restoring the relationship around whatever occurred, to continue to create that safe environment where everybody is welcome and able to achieve.

We also promote a culture of positive behaviour. As a PB4L ('positive behaviour for learning') school we celebrate and recognise positive behaviour in our students on a daily basis.



# Where are we?



Bredins Line, Marton 4710,  
Rangitikei, New Zealand

T + 64 6 327 7024

F + 64 6 327 8287

E [admin@rangitikeicollege.school.nz](mailto:admin@rangitikeicollege.school.nz)

# Rangitikei College profile

<b>Secondary School:</b>	Years 9-13
<b>School Roll (2017):</b>	328
<b>Students (2017):</b>	Māori 33%
	Pākehā 55%
	Pacific 9%
	Other ethnic groups 3%
<b>Teaching Staff:</b>	35
<b>Year Established:</b>	1958
<b>School Grounds:</b>	10 hectares





[www.rangitikeicollege.school.nz](http://www.rangitikeicollege.school.nz)